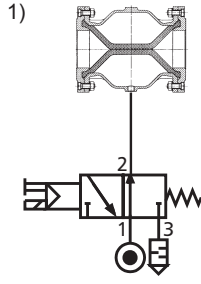
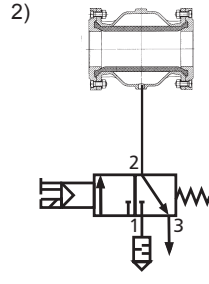


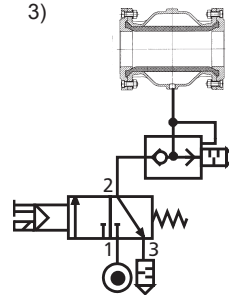
## Kumandalar / Controls



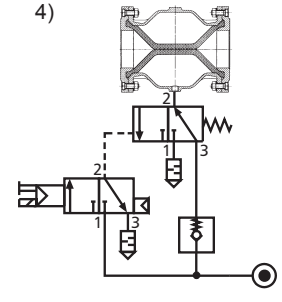
3/2 yollu manyetik vana  
akımsız açık (NO)  
3/2-way solenoid valve  
currentless open (NO)



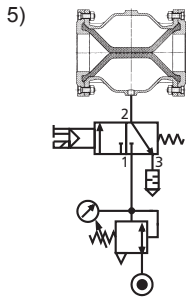
Emiş iletiminde:  
Vakum pompası bağlantı 3'te  
Conveying by suction:  
vacuum-pump at connection 3



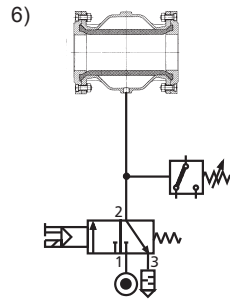
3/2 yollu manyetik vana (NC)  
hızlı hava tahliye vanalı  
3/2-way solenoid valve (NC)  
with quick exhaust valve



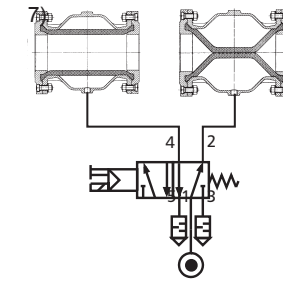
Basınçlı hava/akım kesintisinde:  
Sıkıştırma vanası kapalı konumda kalır  
For pressure power shut down:  
Pinch valve remains in closed position.



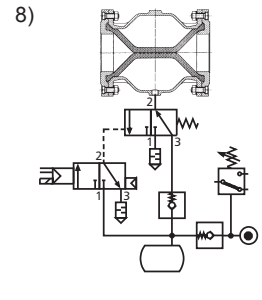
3/2 yollu manyetik vana (NC)  
basınç düşürücü ile akımsız olarak kapatılmış  
3/2-way solenoid valve (NC)  
normally closed with pressure regulator



3/2 yollu manyetik vana, akımsız  
kapalı (NC), basınç şalteri  
3/2-way solenoid valve normally  
closed (NC) with pressure switch



5/2 yollu manyetik vana  
Alternatif kumanda için  
5/2-way solenoid valve  
for various regulation



Basınçlı hava/akım kesintisinde: Sıkıştırma  
vanası açık konumdayken de kapatır (hava haznesi).  
For pressure power shut down: Pinch valve  
can close in open position (air tank).

## Pinç vanalarının açılma ve kapanma süreleri Opening and closing times of the Pinch Valve

Nominal genişlik (mm)	Açılma süresi (sn.)	Kapatma süresi (sec.)
Diyametre (mm)	Opening time (sec.)	Closing time (sec.)
10	<1,0	<1,0
15	<1,0	<1,0
20	<1,0	<1,0
25	<1,0	<1,0
32	<1,0	<1,0
40	<1,0	<1,0
50	<1,0	<1,0
65	1,0	<1,0
80	1,7	1,0
100	2,2	1,8
125	4,0	2,5
150	7,0	4,0
200	13,0	9,0
250	25,0	16,0

Veriler aşağıdaki temellere dayanmaktadır:

- Manşet: Doğal lastik (Tip: 03X)
- Kumanda basıncı: 2,5 bar / Çalışma basıncı: 0bar (atmosfer)
- Pilot vana: NW 9mm / G1/4" (direkt montaj)

The details are based on the following:

- Sleeve: Natural rubber (type: 03X)
- Control pressure: 2,5bar / Operation pressure: 0bar (Atm.)
- Solenoid Valve: DN 9mm / G1/4"(directly mounted)

Açma ve kapatma süreleri değişebilir ve aşağıdakilere bağlıdır:

- Manşet içindeki çalışma basıncı
- Kumanda elemanlarının hava geçişi
- Zamanlama frekansı (Kapatma/Açma)
- Manşetin lastik kalitesi
- Sıcaklık
- Kumanda hattının uzunluğu

The opening and closing times may vary. These times depend on:

- Operation pressure inside the sleeve
- Airflow capacity of control device
- Number of cycles (open/close)
- Material of the sleeve
- Temperature
- Length of control line

Teknik değişiklik hakkı saklıdır.

Technical details subject to change without notice.

**AKO Armaturen & Separations GmbH**

D-65468 Trebur-Astheim • Adam-Opel-Str. 5 • Telefon: +49 (0) 61 47-9159-0 • Faks: +49 (0) 61 47-9159-59

E-posta: ako@ako-armaturen.de • Internet: www.pinc-vana.web.tr